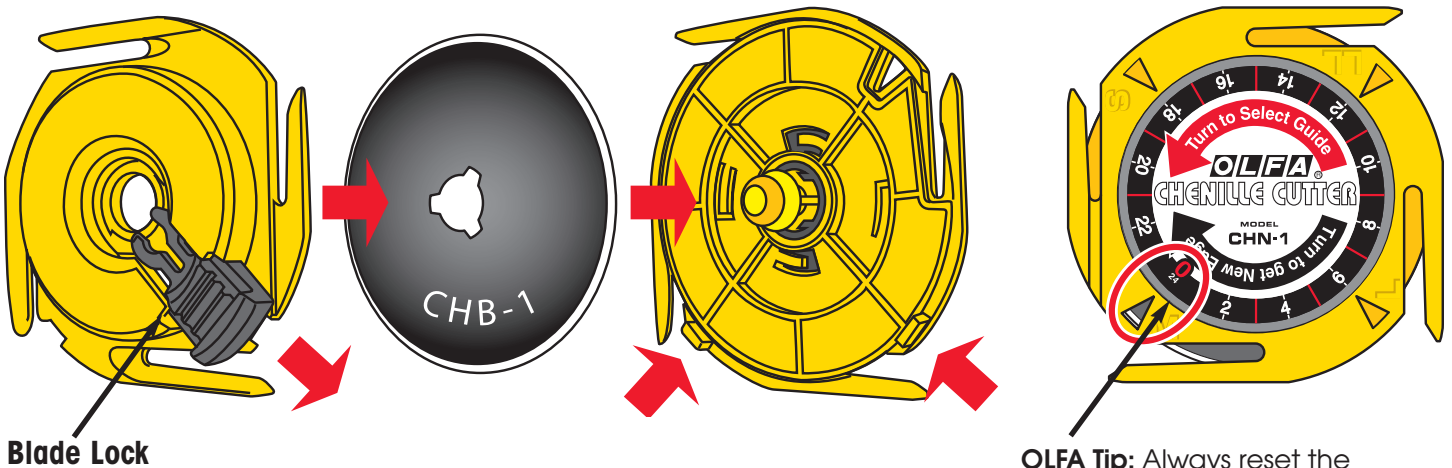


CHENILLE CUTTER ASSEMBLY (CHN-1) (with CHB-1 Blade)

BLADE REPLACEMENT

Take apart your cutter one piece at a time, laying out the parts in proper order and the correct position as they detach. Reassemble with new blade. Dispose of the old blade using the package that the new blade came in; tape it securely together and dispose.



OLFA[®]
Best made cutting tools in the world.[®]